

Make your pool deck stylish

LUXAPOOL® Poolside & Paving is a decorative, non-slip (P5 rated) coating that is easy to apply and provides a durable surface, suitable for most pebble, concrete and paved pool surrounds.

A range of non-slip textures are achievable through simple variations during application.

LUXAPOOL® Poolside & Paving can be used on:

- Pool surrounds
- Decks and patios
- Balconies
- Boat decks, pontoons
- Wharf and landing dock surfaces
- Steps, stairs and walkways

LUXAPOOL® Poolside & Paving is available in a range of stylish colours and may be used on pebblecrete, sandstone, cement render, masonry, fibre-cement sheet and unglazed tiles.

To ensure adhesion to these surfaces, inclusion of a specialty primer is mandatory as the first coat of a systems approach. For enhanced stain resistance and to allow easier maintenance, a clear gloss protective finish is available (if required)†.

All colours are available in 15 L and 4 L sizes (see Colour Chart).



**Luxa
pool**
Poolside & Paving

For more information contact

Colormaker Industries

44 Orchard Rd Brookvale NSW 2100 AUSTRALIA

tel: +61 2 9939 7977

fax: +61 2 9939 6685

email: info@luxapool.com.au

web: www.luxapool.com.au

LUXAPOOL® is a registered trade mark

© COLORMAKER INDUSTRIES 2023



**Decorative
Durable
Non-slip
Poolside & Paving**

LUXAPOOL® is sustainably manufactured using 100% renewable energy. Colormaker Industries is targeting carbon neutrality by December 2024.



202306v4L



Available in a range* of stylish colours

Typical application for pool coping or surrounds

Preparation

Surfaces must be clean, dry and stable.

You will need

Priming options:

- ACRYLMERIC® WB Epoxy Primer Membrane 6 m²/L for fibreglass, damp surfaces or new cement, or
- ACRYLMERIC® Superseal Primer 8-10 m²/L for most masonry surfaces

Fill coat and top coat:

- LUXAPOOL® Poolside & Paving 2 m²/L/coat

Protective clear coating:

- UNICRYL® HD Clear Glaze approx. 8-10 m²/L

Application

Priming all surfaces:

- 1 coat ACRYLMERIC® Superseal Primer or ACRYLMERIC® WB Epoxy Primer Membrane by brush or roller.

Lightly sand old fibreglass first, then prime.

Fill coat and top coat for Concrete Surfaces:

- 2 coats of LUXAPOOL® Poolside & Paving

The texture of the final coat can be customised using various rollers. Contact Colormaker Industries for advice.

Fill coat and top coat for Pebblecrete or Pavers:

- 2 coats of LUXAPOOL® Poolside & Paving

The first coat of LUXAPOOL® Poolside & Paving should be applied using a spreader blade, trowel or squeegee. The second coat can be applied the same way or by roller.

Fill coat and top coat for Fibreglass:

- 2 coats of LUXAPOOL® Poolside & Paving

Both first and second coats can be applied by short nap roller.

To achieve a P5 non-slip rating, top coats must be applied with a 10 mm nap roller.

Drying times (at 25 °C and 50% Relative Humidity)

| | |
|---------------------------------------|---|
| ACRYLMERIC® WB Epoxy Primer Membrane | 5 hrs |
| ACRYLMERIC® Superseal Primer | 4-6 hrs |
| LUXAPOOL® Poolside & Paving base coat | 8 hrs |
| LUXAPOOL® Poolside & Paving top coat | 24 hrs for light traffic 14 days for full cure |
| UNICRYL® HD Clear Glaze** | 7 days for full cure |

*Allow LUXAPOOL® Poolside & Paving top coat to dry completely before applying UNICRYL® HD Clear Glaze.

**LUXAPOOL® Poolside & Paving overcoated with UNICRYL® HD Clear Glaze has a reduced P4 non-slip rating.

Allow a minimum of 14 days drying time for the top coat to fully cure before placing outdoor furniture on the coated surface.

NOTE: Do not apply LUXAPOOL® Poolside & Paving or UNICRYL® HD Clear Glaze below 15 °C, or when rain is forecast within 7 days of application. For application during winter months, contact Colormaker Industries for advice.

Innovation

An innovative concept in decoration and maintenance for poolside and exterior surfaces.

| | | | |
|---|--------------------------|---|---|
| ✓ | Water-based | ✓ | Ready to use from container |
| ✓ | Environmentally friendly | ✓ | UV resistant, tough & durable |
| ✓ | Low VOC | ✓ | Excellent adhesion to a wide range of exterior surfaces |
| ✓ | P5 Non-slip rated | | |

Colormaker Industries

Quality coatings through research and innovation

For over 65 years, a commitment to developing industry leading products through extensive research has positioned Colormaker Industries as a leader in the coatings industry.

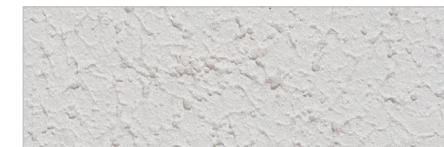
100% of Colormaker's electricity comes from renewable sources. Our solar array generates twice as much electricity as needed—enough to power 20 homes and save over 150 tons of greenhouse gases per year.

Colormaker Industries is Australian owned.



Colours shown above are as close as printing processes allow and do not show the textured finish*. Perceived colour once painted may vary and is dependent on daylight conditions, architectural and landscaping features and product texture. Prospective users and specifiers must satisfy themselves as to the suitability of the coating and colour prior to application. Colour samples may be made available for this purpose. Scan the QR code below for information on how to choose LUXAPOOL® Poolside & Paving Colours.

COLORBOND® Steel colour names are registered trade marks of BlueScope Steel Ltd. Other colours available by special arrangement. Premium charges may apply. All colours are available in 4 L and 15 L sizes.



*LUXAPOOL® Poolside & Paving P5 Non-Slip texture

